

Week 7 Meeting



2/28/19

Team Leader: Tam

Other Team Members: Katayi, Nur, Chufu, YJ

Advisor: Dr. Ajjarapu

Safety Moment

HAND WASHING IN THE WORKPLACE



WHO'S WASHING AND WHO'S WATCHING?

56% of Americans report seeing coworkers leave a workplace restroom without washing their hands.

24%
Frequently

32%
Occasionally

Observed a coworker skip washing

© 2018 BRADLEY CORPORATION HEALTHY HAND WASHING SURVEY
ALL INFORMATION UNDER COPYRIGHT OF BRADLEY CORPORATION



How to handwash?

WASH HANDS ONLY WHEN VISIBLY SOILED! OTHERWISE, USE HANDRUB!



Duration of the entire procedure: 40-60 sec.



Wet hands with water



Apply enough soap to cover all hand surfaces.



Rub hands palm to palm



right palm over left dorsum with interlaced fingers and vice versa



palm to palm with fingers interlaced



backs of fingers to opposing palms with fingers interlocked



rotational rubbing of left thumb clasped in right palm and vice versa



rotational rubbing, backwards and forwards with clasped fingers of right hand in left palm and vice versa.



Rinse hands with water



dry thoroughly with a single use towel



use towel to turn off faucet

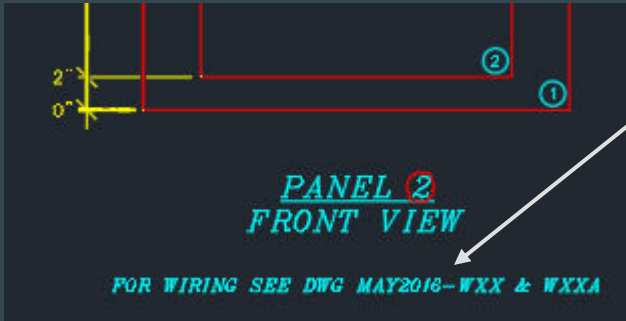


...and your hands are safe.

Topics

- Layout Drawings

W04 Drawing



Is it referring to the wiring diagram we will be working on after Spring Break?